

AIR EXPO FVG 2024

LIKH - RIVOLI DI OSOPPO

July 13, 2024

From 09:00 to 18:00

INFO TO THE PILOTS

**ENTI PROMOTORE : FONDAZIONE LUALDI AEROSPAZIO
ETS**

**ENTE ORGANIZZATORE: AVRO Srl/ FONDAZIONE LUALDI
AEROSPAZIO ETS**

PROCEDURES FOR ARRIVALS AND DEPARTURES OF VISITORS / PILOTS PARTICIPATING AT THE AIR EXPO FVG 2024

The organization takes flight safety very seriously and for this reason has put in place all measures to ensure the smooth running of all the various aeronautical activities that will take place on the Nino Pittini airfield (AVRO) on 13 July 2024.

An aspect to which particular attention is paid is to ensure "regular" flows of arriving and departing aircraft in order to avoid uncontrolled crowding of aircraft, in the circuit and on the airport, at particular times.

For this reason, the organization undertakes a complex coordination work with all the participating pilots that has already given good results in other events.

All participating visitors are asked to indicate the estimated arrival time when filling in the PPR..

Scrupulous compliance with the procedures and rules that have been established have a single purpose:

ENSURING THE SAFETY OF ALL

GENERAL COMMUNICATIONS

The track in use will be the asphalt one, orientation 03/21.

The radio contact will be with Rivoli Radio which will operate on the 122.610 frequency and will provide traffic information.

Up to a tail wind component of 5 Kts all landings will take place on runway 03.

Take-offs during the day will take place on runway 03, while from 5 pm to favor a fast outflow take-offs will be allowed on runway 21 and unauthorized landings unless fully compatible with the departing traffic.

Taxiing to leave the airfield at the end of the meeting will be regulated by the organization staff up to the waiting point. On the established frequency, the pilot will take off and leave the circuit.

IMPORTANT NOTES FOR EVERYONE

- The parking area of the visitor pilots are on grass.
- Be aware of the NO FLY ZONE (Regional Natural Park of Cornino lake).
- Avoid flying over the town of Osoppo (north of the runway).
- ONCE LANDED, you will be escorted by the staff to collect your data (downloadable on the AVRO website).

SUGGESTED PROCEDURES

ARRIVALS

Arrivals can take place from 09:00 to 18:00.

RECOMMENDED RETURN POINT:

- UP TO 5 Kts OF TAILWIND, RUNWAY 03 WILL BE MAINTAINED FOR LANDING. ALL APPROACH TRAFFIC IT IS SUGGESTED TO REPORT THE CASTLE OF SUSANS, LOCATED 2 Nm ON THE FINAL APPROACH COURSE FOR RWY 03. (See map)
- After leaving the reporting point, continue on the final approach course. It is advisable to keep a speed of 80 Kts on the approach path in order to maintain a constant separation from the traffic that precedes / follows.
- Any go-around must be made to the left to go back to the main reporting point - Susans Castle - and try the approach again.
- **ATTENTION: in the event of a go-around, once you enter the left-hand cdownwind 03, be very careful not to enter the NO FLY ZONE shown on the Jeppesen map (Lake Cornino Regional Natural Park); keeping to the left of the Tagliamento river there is no risk of going to the forbidden area.**
- Call on the final for landing 03.
- after landing, vacate the runway immediately, on the right side, to continue taxiing according to the directions.
- Limit radio calls and inter-aircraft communications (formation flights) to a minimum.
- Service personnel in the movement areas will provide parking assistance.
- REMEMBER TO CLOSE THE FLIGHT PLAN IF ACTIVE.

IN CASE OF A TAILWIND COMPONENT MORE THAN 5 KTS, THE RWY 21 WILL BE USED. INITIAL REPORTING POINT CASTLE OF SUSANS, FOLLOWING RIGHT DOWNWIND 21, BASE 21, FINAL 21.

DEPARTURES

The main runway for take-offs at the end of the meeting, from 17:00 onwards, will be rwy 21 which will be maintained up to 5 Kts of tailwind.

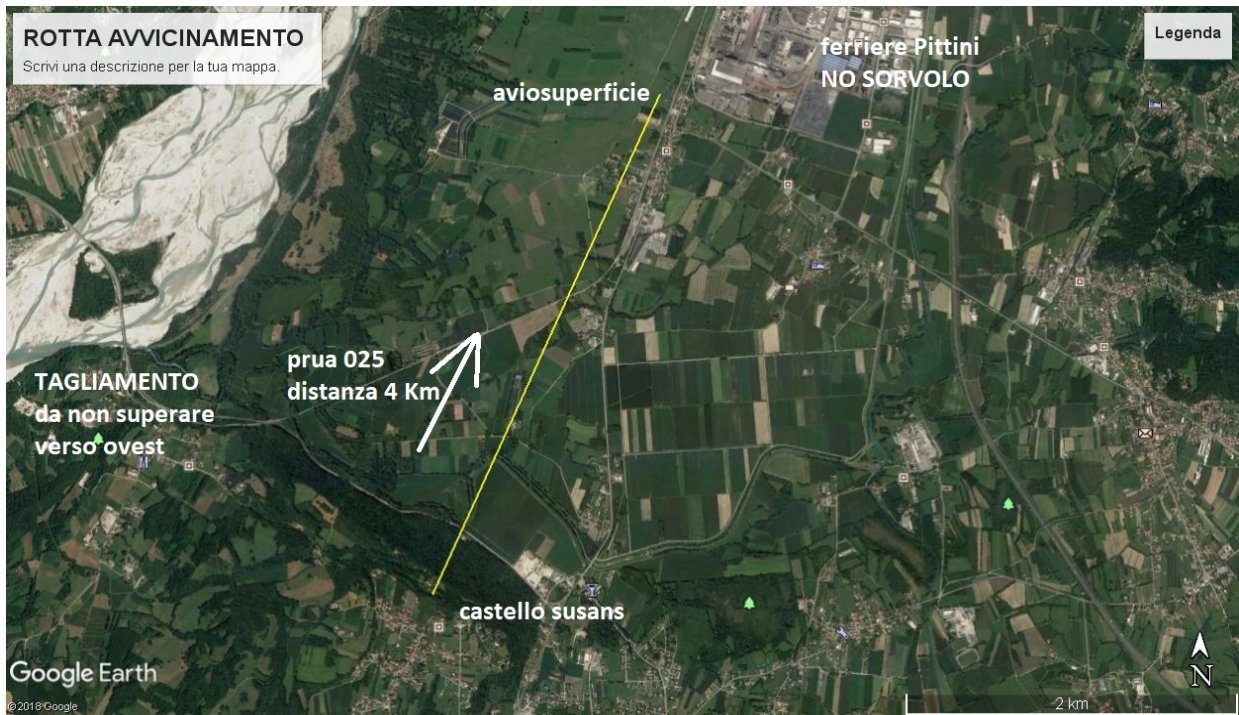
- Before starting, carry out a radio check on frequency 122.610 where authorization to start the engine with marshall in sight will be requested.

- After starting the engine, start taxiing to the waiting point of the runway in use, following the instructions of the service personnel.
- Enter the runway if authorized by radio or by a person from the dedicated organization who will be operating near the take-off area and in contact with the TWR via W / T.
- Minimize alignment and take-off times and clear the circuit as soon as possible.

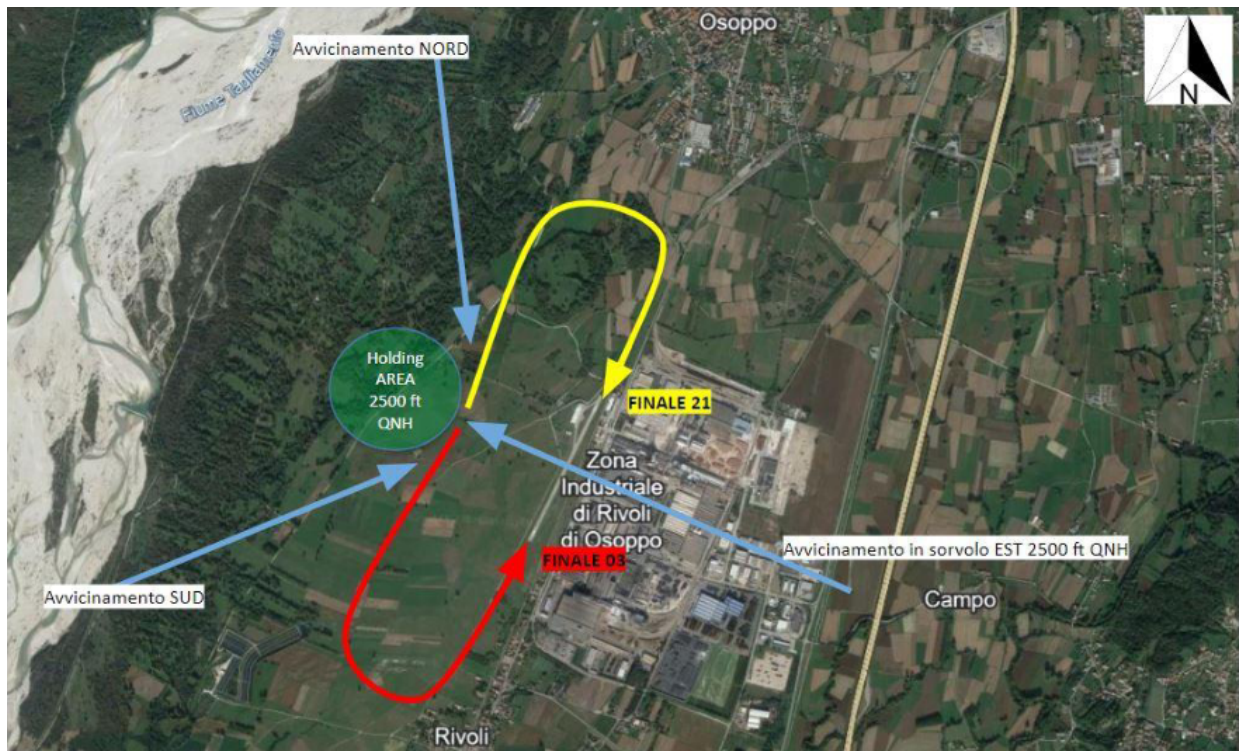
IMPORTANT NOTES FOR EVERYONE

- The visitor plane parking lots are all on the grass
- Flying over the NO FLY ZONE (Cornino Lake Regional Natural Park) is prohibited.
- Avoid flying over the town of Osoppo (north of the runway).
- ONCE LANDED, you will be escorted by the staff to arrive in the exhibition area

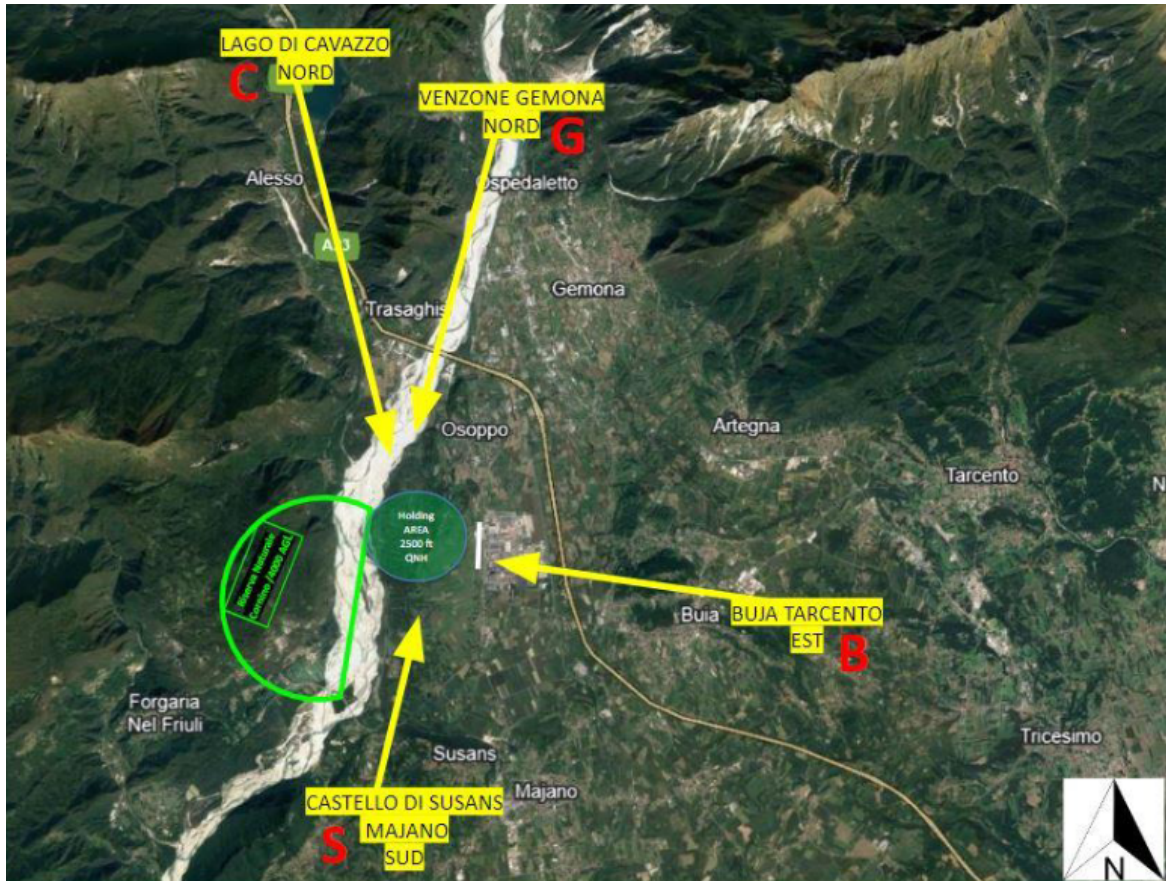
STRAIGHT-IN APPROACH RWY 03



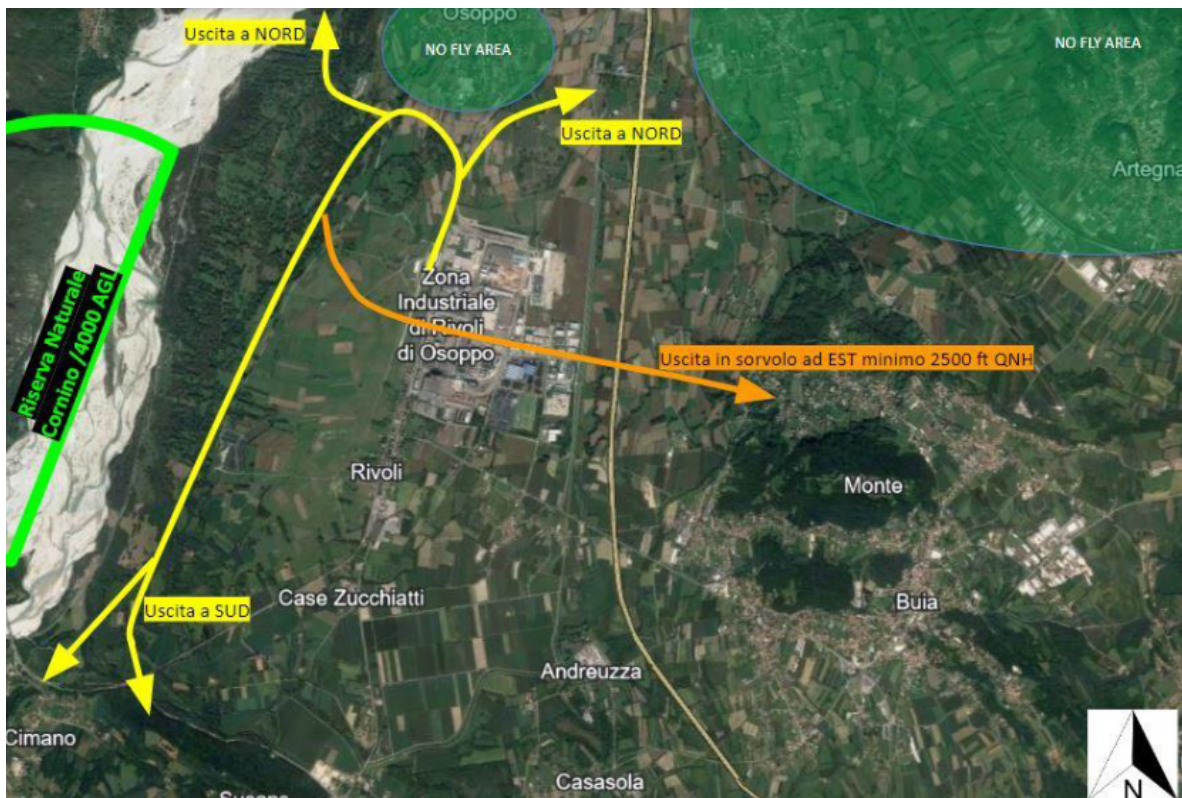
Arrival Traffic Patterns and Holding



Reporting Points



Departures



LAYOUT OF THE EXHIBITION AREA

